

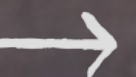
# MERCURE MEETINGS

## MEETINGS & EVENTS KIT

MERCURE

HOTEL

NEWCASTLE



## WELCOME TO MERCURE NEWCASTLE

Join us at the refreshed Mercure Newcastle, in the emerging West End of Newcastle. A short walk from the Honeysuckle light rail station, with easy access to everything Newcastle can offer, from the theatre to our stunning working harbour and amazing beaches. Located at the heart of the Hunter, our hotel is a springboard for the award-winning Hunter Valley Wine Region, the vibrant Lake Macquarie and the beautiful coast of Port Stephens. Mercure Newcastle is the perfect base for a corporate or leisure adventure.

Featuring 131 comfortable rooms across six levels, seven meeting and event spaces, including boardroom and versatile conference rooms. Bar Distrikt offers an authentic tasting experience, supporting local artisan producers. Opening at the start of the day with a full buffet breakfast and barista coffee, then continuing into the night with an all-day menu and in-room dining available. Our dedicated staff are here for anything you need and to ensure you have an enjoyable visit.



# CARBON NEUTRAL MEETINGS

MINDFUL MEETINGS BY MERCURE HOTELS ARE  
CARBON NEUTRAL WITH A COMMITMENT TO MAKING  
THE WORLD A BETTER PLACE.  
TO FIND OUT MORE VISIT [WWW.MERCURE.COM](http://WWW.MERCURE.COM)

- Your Mindful Meeting will be carbon neutral
- Greenhouse gases produced during the meeting are offset by funding renewable energy sources through the Carbon Reduction Institute
- We fund the cost of the offsets and do not pass them on to you
- Our hotel follows Accor's global environmental charter with priority actions identified to reduce energy and water consumption and improve waste management and recycling



## MINDSPACES



### MERCURE MINDFUL MEETING ROOMS INCLUDE:

- Room arrangements designed to facilitate collaboration and connection
- Access to natural light and fresh air where possible, with multiple and versatile spaces throughout the hotel
- Reusable water jugs, to minimise the use of single-use plastic and unnecessary packaging
- Room diffusers to facilitate a calm and relaxed environment



## MEETING FACILITIES

Suitable for functions of up to 120 guests. The hotel offers two flexible pillar-less meeting areas: Hunter and Newcastle rooms, which also have optional operable walls, creating four smaller rooms. These spacious modern rooms offer an abundance of natural light and a variety of set-up options.

Features includes:

- Room hire
- Food & beverage options that are flexible and specially curated for you
- Food & beverage options available at any time before, during and after your meeting
- Nespresso or barista made coffee
- In-house audio and video equipment including data projector and screen
- Whiteboard and flipchart
- Wheelchair accessible
- Complimentary Wi-Fi
- Onsite parking (limited)
- Pads, pens & water
- Dedicated meeting coordinator
- Lift access to guest rooms



# MERCURE MEETINGS

INTRODUCTION CARBON NEUTRAL MEETINGS MINDSPACES MEETING FACILITIES **HOTEL FACILITIES** FLOOR PLANS CAPACITY CHART DAY PACKAGES

AUDIO VISUAL & STAGING SERVICES LET'S MAKE IT REWARDING CONTACTS

## HOTEL FACILITIES



In addition to a convenient location, Mercure Newcastle offers a range of thoughtful amenities designed to make your stay as comfortable as possible.

Facilities includes:

- 24-hour front desk
- Express check-in and check-out kiosks
- Outdoor pool
- Distrikt bar and restaurant on site
- Complimentary Wi-Fi
- Air conditioning
- Spacious accommodation rooms with ensuite bathrooms
- Daily housekeeping
- On-site parking (limited)
- In-room dining

Our helpful staff is on hand to assist you with anything you may need during your visit.

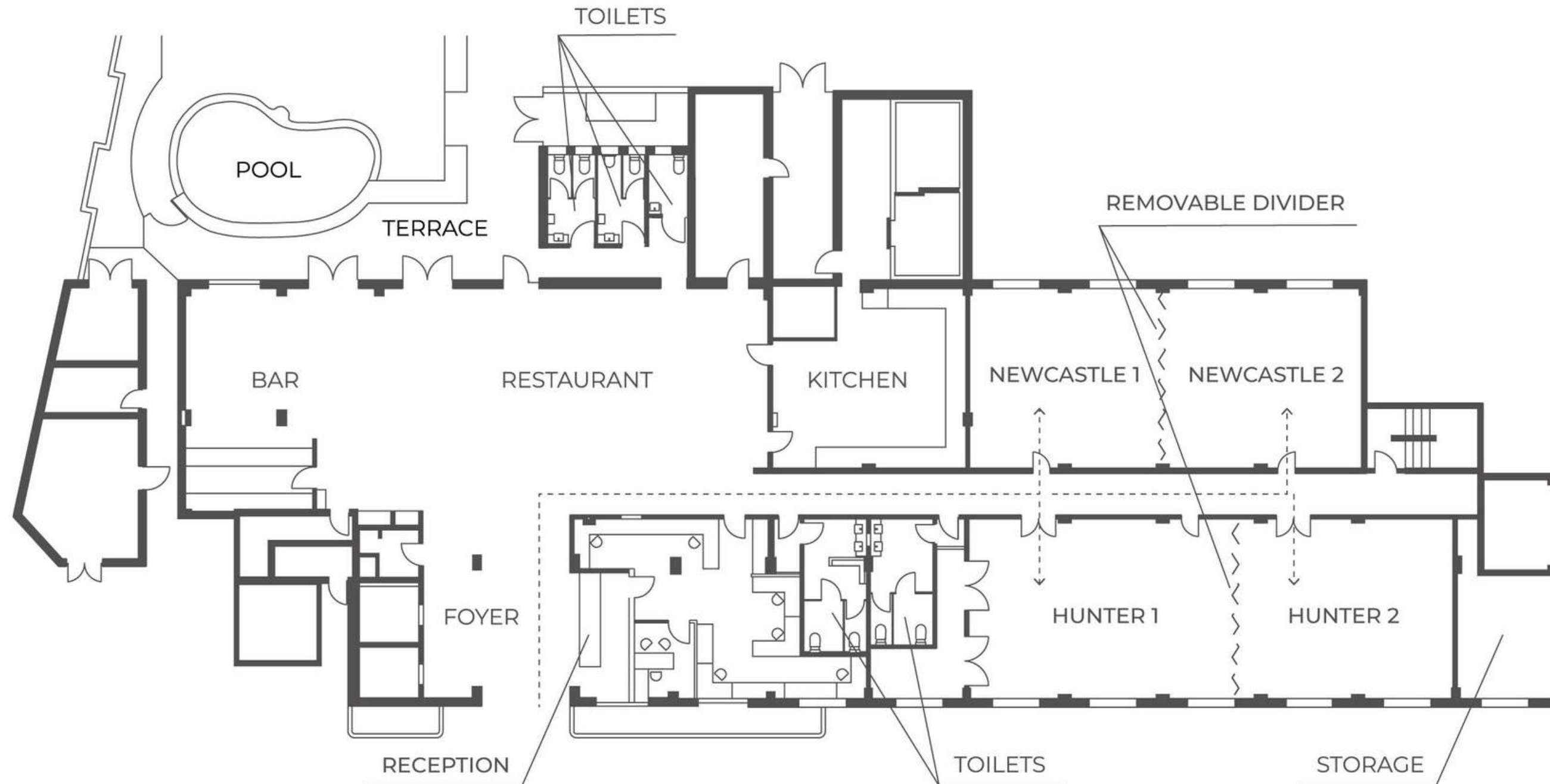


# MERCURE MEETINGS

INTRODUCTION CARBON NEUTRAL MEETINGS MINDSPACES MEETING FACILITIES HOTEL FACILITIES **FLOOR PLANS** CAPACITY CHART DAY PACKAGES

AUDIO VISUAL & STAGING SERVICES LET'S MAKE IT REWARDING CONTACTS

## GROUND FLOOR PLAN



# MERCURE MEETINGS

INTRODUCTION CARBON NEUTRAL MEETINGS MINDSPACES MEETING FACILITIES HOTEL FACILITIES FLOOR PLANS **CAPACITY CHART** DAY PACKAGES

AUDIO VISUAL & STAGING SERVICES LET'S MAKE IT REWARDING CONTACTS

## CAPACITY CHART

VENUES	ROOM ARRANGEMENTS OPTIONS WITH MAXIMUM CAPACITY						
	THEATRE	BANQUET	COCKTAIL	CLASS ROOM	BOARD ROOM	U-SHAPE	CABARET
HUNTER (126 M2)	120	100	110	60	45	40	70
HUNTER 1 (76 M2)	70	60	80	30	28	25	50
HUNTER 2 (50 M2)	30	30	50	18	15	15	20
NEWCASTLE (101 M2)	110	90	100	45	35	30	60
NEWCASTLE 1 (50 M2)	30	20	40	12	15	15	-
NEWCASTLE 2 (51 M2)	40	30	60	18	20	15	20
BOARDROOM (36 M2)	20	-	-	12	12	12	-





## DAY DELEGATE PACKAGES

MINIMUM GROUP OF 20 DELEGATES

**FULL DAY PACKAGE \$69 PER PERSON | HALF DAY PACKAGE \$60 PER PERSON**

### WHAT IS INCLUDED

#### CATERING ON THE DAY:

##### MORNING TEA

A great way to start your function. Our morning tea has a variety of teas, coffees, savoury and sweet snacks. Served in the meeting room.

##### THE LUNCH TABLE

Served in either the event room or Distrikt restaurant upon request. Lunch features an assortment of sandwiches, wraps, chef's selection of hot substantial meal, salads, seasonal fresh fruit with tea, coffee, juice and water.

Lunch buffet is available upon request.

##### AFTERNOON TEA

Perfect way to end the day. Served in the meeting room, sweet and savoury snacks, seasonal fresh fruits with tea and coffee is the ideal way to conclude any meeting.

#### OTHER INCLUSIONS:

- Full or half day room hire cost (depending on the package chosen) with the room arrangements of your choice.
- Complimentary Wi-Fi.
- Audio and visual equipment including projector, a screen and a flip chart.



## BUILD YOUR OWN LESS THAN 20 DELEGATES



- Room hire - ask our dedicated Events Coordinator for pricing
- Screen hire \$50 per room
- Projector hire \$100 per room
- Flip chart hire \$30 per room
- Arrival tea & coffee \$6.50 per person
- Buffet lunch served in the pre-function area + \$15 per person
- 1 hour canape package + \$22 per person / 2 hour canape package \$35 per person
- 2 course dinner + \$60 per person / 3 course dinner \$70 per person
- 1 hour beverage package + \$22 per person / 2 hour beverage package \$40 per person / 3 hour beverage package \$50 per person



## AUDIO VISUAL & STAGING SERVICES



Our rooms are fitted with an in-house data projector and screens.

Should you have additional audio visual requirements, we are happy to arrange extras to help cater your requirements.

Our experienced team are available to assist with anything else you may need to enhance your meeting or event.



## LET'S MAKE IT REWARDING

HOST YOUR NEXT EVENT, SEMINAR, OR SOCIAL GATHERING AT OUR HOTEL & EARN

# *2X reward points*

### HOW TO BE REWARDED:

- Register for the offer (join ALL Meeting Planner if you are not already a member)
- Hold and pay for your event by 31 December 2024.
- Your points will be credited to your account the month after your event has been paid for.

**REGISTER NOW**



## CONTACTS

### MERCURE NEWCASTLE

#### CONTACT DETAILS:

12 Steel St, Newcastle West NSW 2302  
+61 (02) 4086 6300  
[HB974-FB@accor.com](mailto:HB974-FB@accor.com)  
[@MERCURENEWCASTLE](http://ALL.COM)

#### SUPPORT TEAM:

Conference & Events Sales Team  
[MERCURE.NEWCASTLE.SALES@ACCOR.COM](mailto:MERCURE.NEWCASTLE.SALES@ACCOR.COM)  
+61 4 9037 7542

